



The evolutive CITIX-AI solution combines artificial intelligence with a high-precision sensor (4K) to count, classify and detect the direction of different means of transport. The data is sent to Eco-Visio, our online data analysis platform.

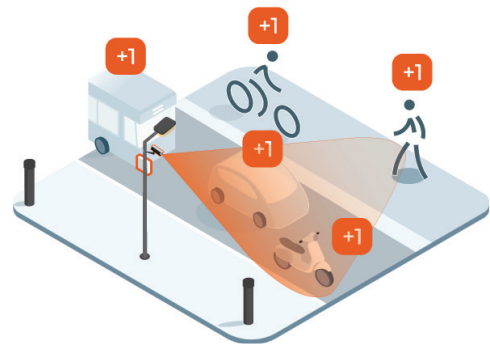
Installed overhead, the CITIX-AI covers passages up to 15 meters (49') wide.

- + Multi-user
- + Artificial intelligence
- + Long range and high accuracy
- + Direction detection
- + Easy installation

Counted users

The CITIX-AI counts and classifies pedestrians, bicycles, mopeds, cars, trucks and buses to obtain reliable and complete traffic trends.

Designed to strict specifications, CITIX-AI is a modern and easy-to-install counter perfect for urban environments with wide lanes.



CITIX-AI can be installed on a high point to allow counting over a large area. It counts, classifies and gives the direction of travel of pedestrians, cyclists, mopeds, cars, trucks and buses. You can find and analyse the data on Eco-Visio.



CITIX-AI is an intelligent, evolutive and easy-to-install counting system. This discreet sensor requires little maintenance and no site visits for maintenance and data collection when automatic transmission is enabled.

All Eco-Counter® products are designed, developed and manufactured in France.

CITIX-AI

General features

Classified users	Pedestrians, bicycles, mopeds, cars, trucks and buses*
Technology	+ Camera with Sony Starvis 4k sensor + Artificial Intelligence Neural Network (AI)
GDPR	GDPR compliant Real-time image processing by the AI algorithm. Only the count data is transmitted
Installation height	4 to 8 m (13' to 26') Optimum : + Pedestrians/Cyclists : 4 m (13') + All users : 6 m (19')
Covered width	Up to 15 m (49') Optimum: 12 m (39')
Direction	Direction detected
Transmission mode	+ Data transmitted through 3G/4G. + Aggregation of data on Eco-Visio by 15 minute increments.
Setting	+ Configuration through an app-based interface + Detection area configured according to the site

*Scooter and e-scooter users are counted and classified as pedestrians.
Utility vans are counted and classified as cars.

Environment

Operating temperature	-30 °C/ 70 °C (-22°F/ +158°F)
IP rating	IP 67
Nighttime counting	Street lighting needed

Physical characteristics

+ Camera

Dimensions	230 mm x 90 mm x 76 mm (9.06" x 3.54" x 2.99")
Weight	1,1 kg (2.43 lbs)
Mounting	The arm of the camera is attached to the pole with hose clamps

+ Modem Box

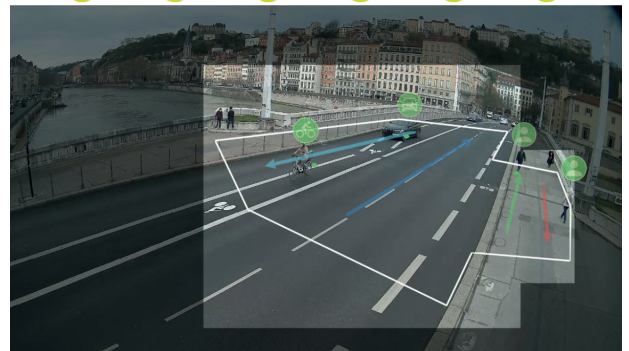
Dimensions	200 mm x 280 mm x 65 mm (7.87" x 11.02" x 2.56")
Weight	1,2 kg (2.65 lbs)
Mounting	The modem box is attached to the pole with hose clamps

Power supply

Power source	+ Box : 110-230 VAC - 12/24 VDC
Consumption	+ ≈ 15 W (max. 20 W)

Connectivity

Cell connection 3G/4G



Example of CITIX-AI system used to count pedestrians, cyclists, mopeds, cars, trucks and buses.

Additional products to support your counting strategy:

PYRO-Box EVO:
Mobile counter
All environnements



MULTI ped. / bicycles:

Permanent counter
Pedestrians and cyclists



Europe | Worldwide
4 rue Charles Bourseul | 22300 Lannion | France
+33 2 96 48 48 81

North America
604-3981 St. Laurent Blvd. | Montreal, QC H2W 1Y5 | Canada
Toll Free: 1-866-518-4404 | Direct: 1-514-849-9779

www.eco-counter.com



Eco-DISPLAY Light Edition is a large format counter that displays bicycle traffic in real time. The display can be connected to any Eco-Counter sensor and can display texts in addition to the count data. Two lines of information can be displayed per side. Each side is fully customizable.

- + High precision
- + Customizable
- + High-visibility
- + Vandalism resistant

Displayed users

Eco-DISPLAY Light Edition displays cyclist counts. The display can show 2 lines of text per side. The text can be of several colors. You can for example display the number of cyclists collected today, this month or this year. Each side can be customized according to your graphic needs (colors, logos, display mode etc...).



Installed alongside a bike path, the Eco-DISPLAY Light Edition allows you to stimulate your community of cyclists. To manage your communication use the potential of a customized public display.



Eco-DISPLAY Light Edition allows you to use up to 2 fields to display the counts and information you want. You can display counts, but also the date, the time or the name of the neighborhood where the display is installed.

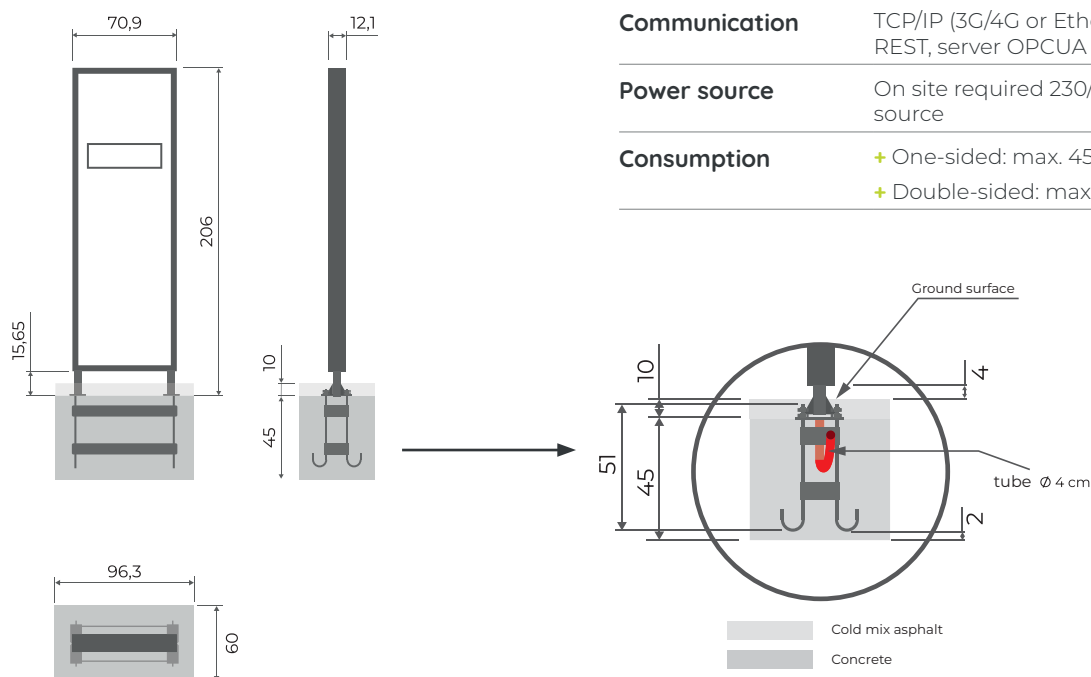
All Eco-Counter® products are designed, developed and manufactured in France.

Eco-DISPLAY Light Edition

General characteristics

Installation	Display anchored to the ground
Waterproofness	IP41
Operating temperature	- 22 °F / + 122 °F (- 30 °C / + 50 °C)
Compatible sensors	Compatible with all types of Eco-Counter sensors
Graphic design	Customizable graphics
Settings	Embedded Web server for maintenance and parameterization of sensors, on site or remotely (by WI-FI or Ethernet link)
Frame color	RAL 9005

Dimensions



Material characteristics

Dimensions	+ 70,9 cm / 206 cm / 12,1 cm + 96,3 cm / 45 cm / 60 cm
Weight	+ ≈ 70 kg (154 lbs)
Displays	+ LED RGB - 16 colors + Pixel spacing: 5 mm + Automatic brightness adjustment according to the environment + Display surface: 18.9" x 6.3" (48 x 16 cm)
Wind resistance	NV65 Class / Zone 5
Materials	+ Powder coated steel frame treated antirust + Anti-graffiti and anti-rust powder coated aluminum frame + Polycarbonate facade LEXAN®
Raccordement	Raccordement filaire - protocole CAN
Communication	TCP/IP (3G/4G or Ethernet 100 Mbps), API REST, server OPCUA
Power source	On site required 230/110 VAC power source
Consumption	+ One-sided: max. 45 W + Double-sided: max. 90 W

Additional products to support your counting strategy:

Eco-DISPLAY Classic+ :
Multi-users
STI Compatible



Urban MULTI:
Permanent counter
Ped./Cyclists



Europe | World
4 rue Charles Bourseul | 22300 Lannion | France
+33 2 96 48 48 81

North America
604-3981 Boul. St-Laurent | Montréal, QC | H2W 1Y5 | Canada
Telephone: +1-514-849-9779 | Toll free: 1-866-518-4404

www.eco-counter.com