



The evolutive CITIX-AI solution combines artificial intelligence with a high-precision sensor (4K) to count, classify and detect the direction of different means of transport. The data is sent to Eco-Visio, our online data analysis platform.

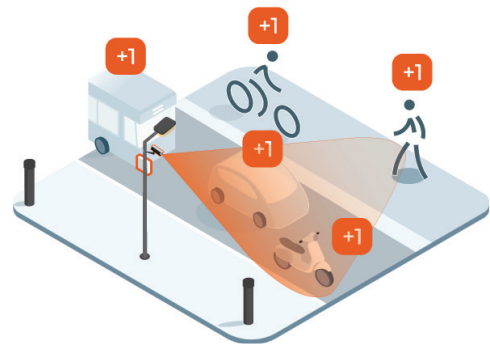
Installed overhead, the CITIX-AI covers passages up to 15 meters (49') wide.

- + Multi-user
- + Artificial intelligence
- + Long range and high accuracy
- + Direction detection
- + Easy installation

Counted users

The CITIX-AI counts and classifies pedestrians, bicycles, mopeds, cars, trucks and buses to obtain reliable and complete traffic trends.

Designed to strict specifications, CITIX-AI is a modern and easy-to-install counter perfect for urban environments with wide lanes.



CITIX-AI can be installed on a high point to allow counting over a large area. It counts, classifies and gives the direction of travel of pedestrians, cyclists, mopeds, cars, trucks and buses. You can find and analyse the data on Eco-Visio.



CITIX-AI is an intelligent, evolutive and easy-to-install counting system. This discreet sensor requires little maintenance and no site visits for maintenance and data collection when automatic transmission is enabled.

All Eco-Counter® products are designed, developed and manufactured in France.

CITIX-AI

General features

Classified users	Pedestrians, bicycles, mopeds, cars, trucks and buses*
Technology	+ Camera with Sony Starvis 4k sensor + Artificial Intelligence Neural Network (AI)
GDPR	GDPR compliant Real-time image processing by the AI algorithm. Only the count data is transmitted
Installation height	4 to 8 m (13' to 26') Optimum : + Pedestrians/Cyclists : 4 m (13') + All users : 6 m (19')
Covered width	Up to 15 m (49') Optimum: 12 m (39')
Direction	Direction detected
Transmission mode	+ Data transmitted through 3G/4G. + Aggregation of data on Eco-Visio by 15 minute increments.
Setting	+ Configuration through an app-based interface + Detection area configured according to the site

*Scooter and e-scooter users are counted and classified as pedestrians.
Utility vans are counted and classified as cars.

Environment

Operating temperature	-30 °C/ 70 °C (-22°F/ +158°F)
IP rating	IP 67
Nighttime counting	Street lighting needed

Physical characteristics

+ Camera

Dimensions	230 mm x 90 mm x 76 mm (9.06" x 3.54" x 2.99")
Weight	1,1 kg (2.43 lbs)
Mounting	The arm of the camera is attached to the pole with hose clamps

+ Modem Box

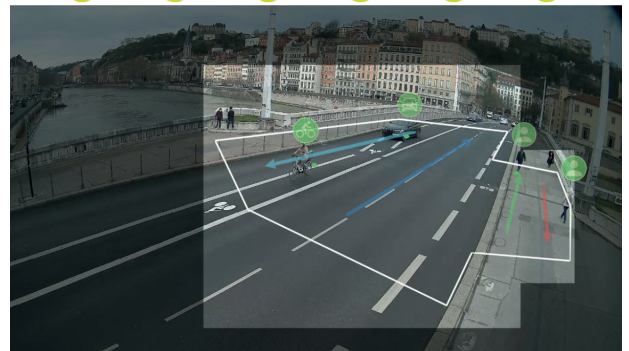
Dimensions	200 mm x 280 mm x 65 mm (7.87" x 11.02" x 2.56")
Weight	1,2 kg (2.65 lbs)
Mounting	The modem box is attached to the pole with hose clamps

Power supply

Power source	+ Box : 110-230 VAC - 12/24 VDC
Consumption	+ ≈ 15 W (max. 20 W)

Connectivity

Cell connection 3G/4G



Example of CITIX-AI system used to count pedestrians, cyclists, mopeds, cars, trucks and buses.

Additional products to support your counting strategy:

PYRO-Box EVO:
Mobile counter
All environnements



MULTI ped. / bicycles:
Permanent counter
Pedestrians and cyclists



Europe | Worldwide
4 rue Charles Bourseul | 22300 Lannion | France
+33 2 96 48 48 81

North America
604-3981 St. Laurent Blvd. | Montreal, QC H2W 1Y5 | Canada
Toll Free: 1-866-518-4404 | Direct: 1-514-849-9779

www.eco-counter.com

The **Eco-DISPLAY Classic+** is an **eye-catching and powerful display** that makes cyclists and pedestrians a more visible part of the urban landscape. Using the **ComEth technology**, the system **can be connected to any Eco-Counter Sensor***.

Composed of one or several **matrix displays**, the **Eco-DISPLAY Classic+** displays real-time passages that are registered by the counter, with cumulative daily, monthly, or even yearly counts. It can also display **scrolling or fixed texts** of your choice on each side. Both sides are **fully customizable** (colors, display areas, scrolling behavior, etc.).

The counts registered are sent to our online software solution **Eco-Visio**, where they can be analyzed and shared with the public.

The ComEth-based system also allows for rich **ITS integration options**. See our ComEth technical sheet for more information.

Physical Characteristics / Specifications

Dimensions	239 x 46 x 16cm (94 x 18 x 6.5 inches)
Weight	≈ 110kg (242.5 lbs)
Waterproofness	IP55
Temperature Resistance	- 30°C / + 50°C (-22°F to 120°F)
Wind Resistance	Zone 5 according to NV65 standard
Material	<ul style="list-style-type: none"> Aluminum frame and shock-resistant polycarbonate (Lexan®) Graffiti-proof and rust-proof powder coating
Display Surface	<ul style="list-style-type: none"> RGB LED lights - 16 colors Pixel pitch: 5mm (0.2") Automatic adjustment to ambient light levels Display surface size: 32 x 16cm (12.5" x 6"), 32 x 32cm (12.5" x 12.5") or 32 x 64cm (12.5" x 25")
Frame Color	Graffiti-proof painting - Customizable color
Design	Fully customizable
Settings	Embedded Web server for maintenance and sensor settings on site or remotely (through WIFI or Ethernet communication)
Power Supply	Client must provide 230/110 VAC power supply
Power Consumption	Max. 360W (double-sided Eco-DISPLAY Classic+) / Average: 80W
Sensor Associated	Compatible with any Eco-Counter sensor*
Connection to the Sensor	Wired connection to the sensor - CAN protocol
Installation	Installation with an anchor base
Hole Dimensions for the Anchor Base	H x L x W = 600 x 700 x 600mm (23.5 x 27.5 x 23.5 inches)



Eco-DISPLAY Classic+ with a ZELT counter for bicycles



Eco-DISPLAY Classic+ with an Eco-MULTI for pedestrians & bicycles



Eco-DISPLAY Classic+ installed on a bike lane in Izmir (Turkey)



* Except CITIX-IR

Non-contractual documentation. Specifications subject to change without notice.

Europe | Worldwide

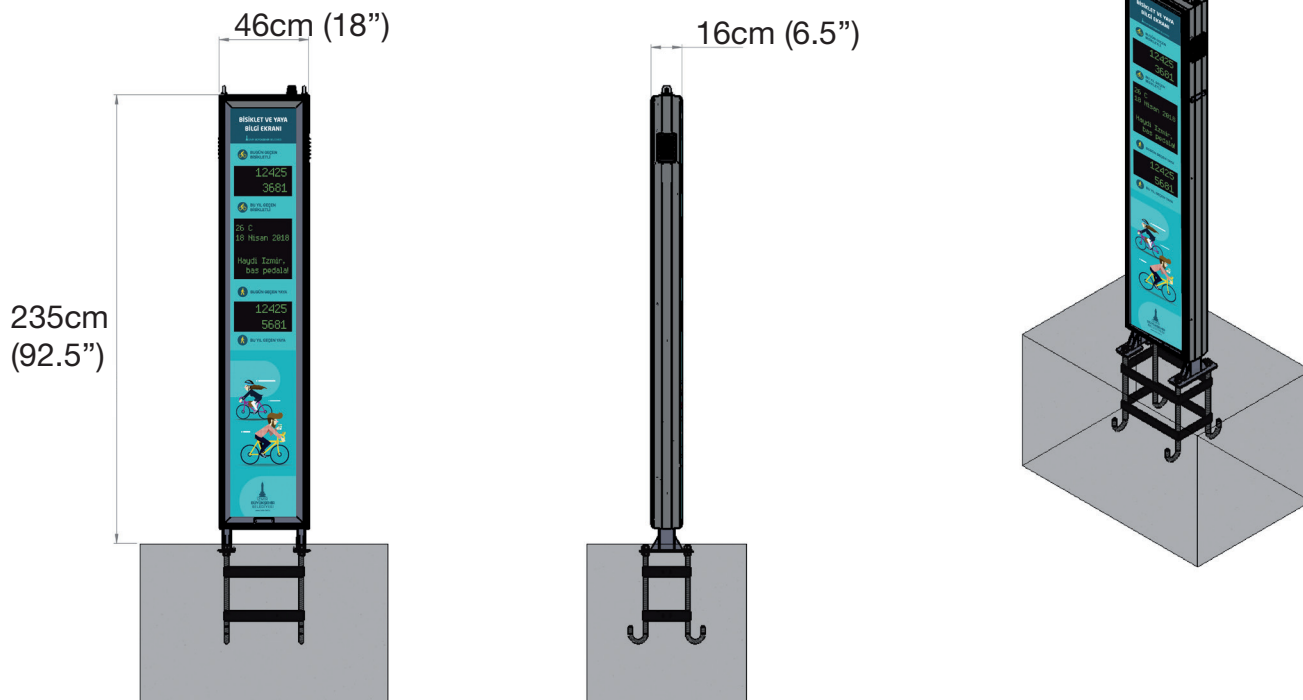
4 rue Charles Bourseul | 22300 Lannion, France
Tél : +33 2 96 48 48 81 | Fax : +33 2 96 48 69 60

North America

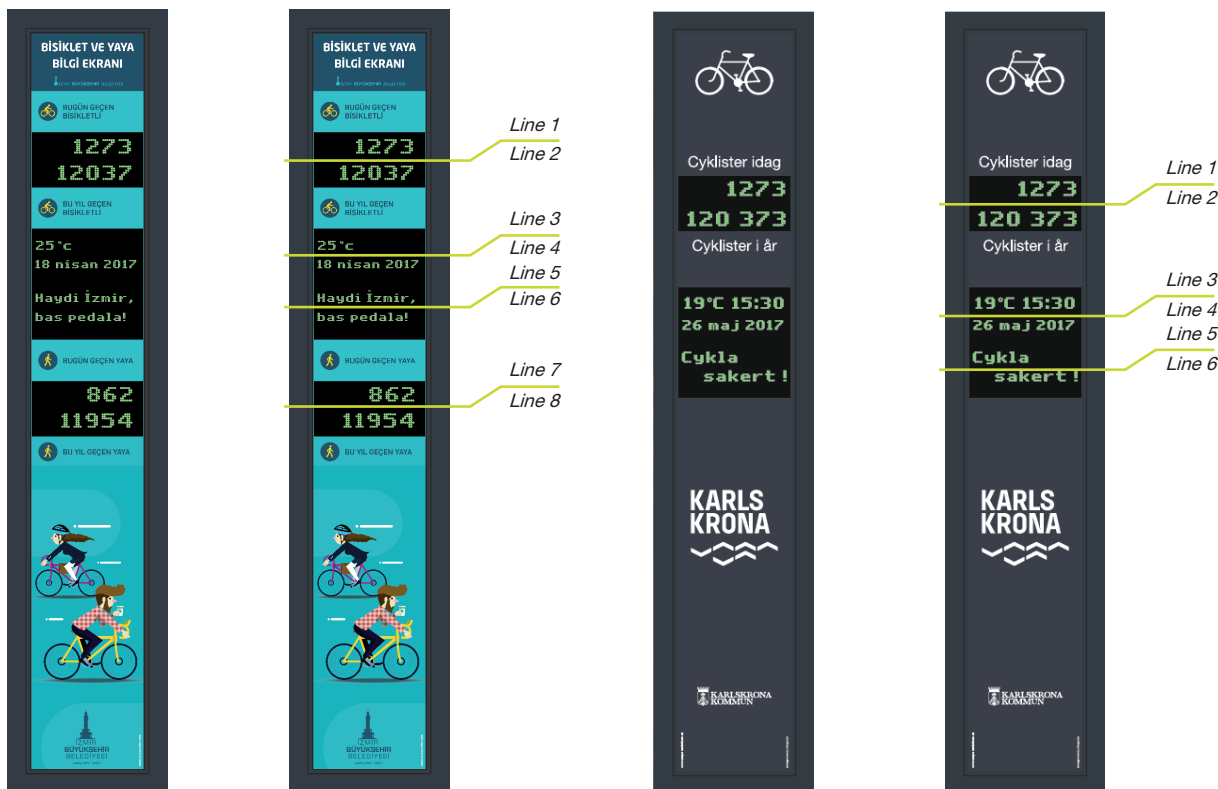
604-3981 St. Laurent Blvd. | Montreal, QC H2W 1Y5 | Canada
Toll Free: 1-866-518-4404 | Direct: 1-514-849-9779

eco-counter@eco-counter.com | www.eco-counter.com

Dimensions



Examples of Display Combinations



8-Line Eco-DISPLAY Classic+

6-Line Eco-DISPLAY Classic+

Preliminary datasheet – Specifications subject to change without notice

Europe | Worldwide

4 rue Charles Bourseul | 22300 Lannion, France
Tél : +33 2 96 48 48 81 | Fax : +33 2 96 48 69 60

North America

604-3981 St. Laurent Blvd. | Montreal, QC H2W 1Y5 | Canada
Toll Free: 1-866-518-4404 | Direct: 1-514-849-9779

eco-counter@eco-counter.com | www.eco-counter.com

Non-contractual documentation. Specifications subject to change without notice.