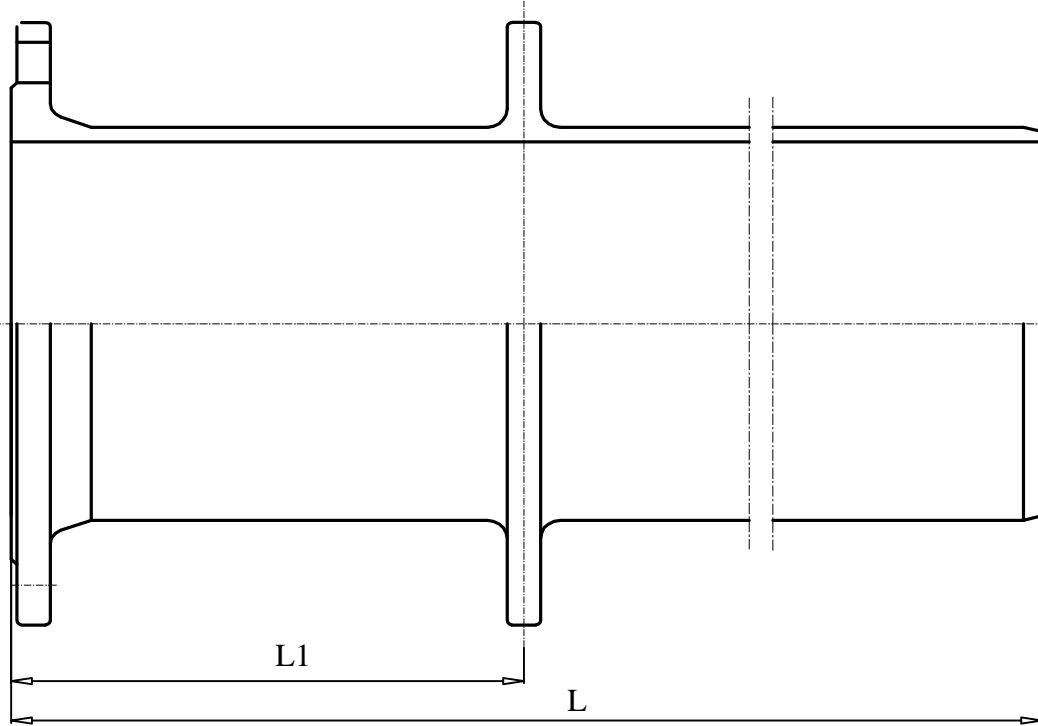


Ductile Iron Pipe



DUCTILE IRON PIPE

ISO 2531 : 1998
 EN545 : 2002
 ISO 4179
 ISO 8179
 EN 1092-2 PN16/25

Flange plain pipe with
 puddle flange
 RAL 5015

Description	DN	L	L1	Ends	PN	Coating	Thickness
DI Pipe with PF	100	1100	600	FL-PF-SP	16	FBE	K12
DI Pipe with PF	200	1100	539	FL-PF-SP	25	FBE	K12
DI Pipe with PF	200	1050	492	FL-PF-SP	25	FBE	K12
DI Pipe with PF	300	1500	600	FL-PF-SP	16	FBE	K12
DI Pipe with PF	400	1500	800	FL-PF-SP	25	FBE	K12
DI Pipe with PF	400	1500	600	FL-PF-SP	16	FBE	K12
DI Pipe with PF	400	1500	800	FL-PF-SP	16	FBE	K12
DI Pipe with PF	600	1500	800	FL-PF-SP	16	FBE	K12
DI Pipe with PF	150	1500	800	FL-PF-SP	25	EPOXY	K9
DI Pipe with PF	150	1500	800	FL-PF-SP	16	EPOXY	K9

Technical Specification:

1. Ductile iron pipe & fitting are manufactured in accordance with ISO 2531;
2. Thickness K9 or K12 for pipes;
3. Flange drilled to PN16 or 25.
4. External and Internal coating: FBE or EPOXY coated to 300 microns.

***Technical improvements reserved the right to DELTA.

Ref. No.: 9423RV2

SUPPLIER:
 XUZHOU DELTA

