

# TIME-OPTIMIZED ASSEMBLY OF STEEL COMPONENTS

## THE LIQUID SHIM PLATE ®



**GAP**  
*specialist*



# ABOUT US ...

Tradition, enthusiasm, innovation



- ◇ Family business since 1886
- ◇ 39 employees (D)
- ◇ Over 2,000 articles
- ◇ Own production
- ◇ R&D team with 5 employees



# THAT'S US

We deliver the

“

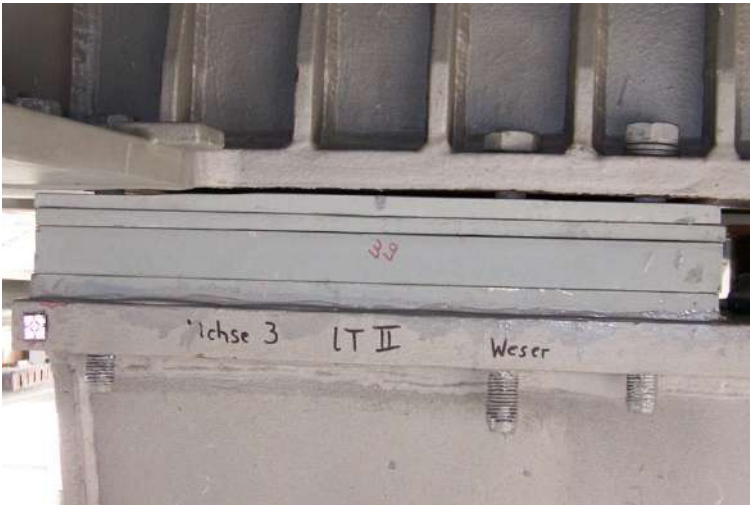
Poly MEHR value



- ◇ Quality "Made in Germany"
- ◇ Worldwide availability
- ◇ Short delivery times
- ◇ Technical support
- ◇ Trained fitters
- ◇ In-house product development
- ◇ DIN ISO 9001 & 14001



# CONNECTION PROBLEMS



# CONNECTION PROBLEMS

## How do gaps arise?

- ⓓ Production-related tolerances
- ⓓ Distortion due to welding
- ⓓ Planning errors
- ⓓ Measuring error
- ⓓ Inaccuracies in assembly
- ⓓ Interfaces (e.g. steel - concrete)



**GAPS AND TOLERANCE EXCEEDANCE IN  
STEEL CONSTRUCTIONS ARE NORMAL**

# CONNECTION PROBLEMS

## Common practical solutions

- ◻ Lining, wedge or shim plates
- ◻ Portable machining, milling
- ◻ Weld
- ◻ Gap filling with silicone, mortar or other inappropriate means



Insufficient materials do not distribute the load evenly and do not protect the steel structure from corrosion.

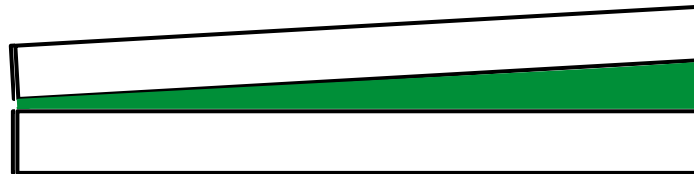


## MM1018 THE LIQUID SHIM PLATE ®

**100% form and force fit**

**NO corrosion**

**Always fits!**



# BETTER THAN LINING OR WEDGE PLATES



**DIN EN**  
**1092-2**



# BETTER THAN LINING OR WEDGE PLATES



# BETTER THAN LINING OR WEDGE PLATES



# THE LIQUID SHIM PLATE ®



Waterways and Shipping  
Administration of the  
Federal Government

# MM1018



**DIAMANT MM1018** is the first  
gap compensation material with general Building  
approval for Steel-steel connections

# THE LIQUID SHIM PLATE ®

## Used and tested worldwide

**1993**

First application  
South Bridge Cologne  
Bearing exchange DB Netz AG

**1999**

March 1999  
First 100  
applications finished

**2006**

February 2006  
First 500  
applications finished

**2013**

15. January 2013  
German abZ granted  
through DIBt Berlin

Sept. 2013  
First 800  
applications finished

**2019**

**1.000 Applications**  
February 2019

1993

2003

2013

2019

**multi  
metall**

multimetall becomes MM1018



**MM1018**

# THE LIQUID SHIM PLATE ®

## Advantages

- ✓ Cost savings
- ✓ Time saving
- ✓ Flexible (always fits!)
- ✓ Safe (approved and tested)
- ✓ Full-Service



**THE LIQUID SHIM SOLUTION ® IS CHEAPER AND  
FASTER THAN SOLID SHIMS OR MACHINING**





## Quick Replacement of POT PTFE Bearing Using DIAMANT MM1018 SMART System

# BEARING EXCHANGE - SMART



# BEARING EXCHANGE - SMART



- ⓓ 100% tolerance compensation – positive form and force fit
- ⓓ No mechanical processing
- ⓓ Fast and flexible
- ⓓ Corrosion protection for the connecting surface
- ⓓ Tested material characteristics, abZ, expert opinion
- ⓓ Always fits!
- ⓓ **Long-term experience from  
> 1,000 buildings worldwide**
- ⓓ In-house assembly team

