

PLATIPUS EARTH ANCHORING SYSTEMS



COMPANY PROFILE



LOW CARBON
ANCHORING SOLUTION

LCAS[®]

COMPANY PROFILE



Founded in 1982, Platipus Anchors has long been recognised as the global leader in the design, manufacture and supply of Percussion Driven Earth Anchors (PDEA®) and Landscape Solutions. Our commitment to innovation and delivering cost-effective ground anchoring solutions has positioned us as the preferred choice for high-profile clients and projects worldwide.

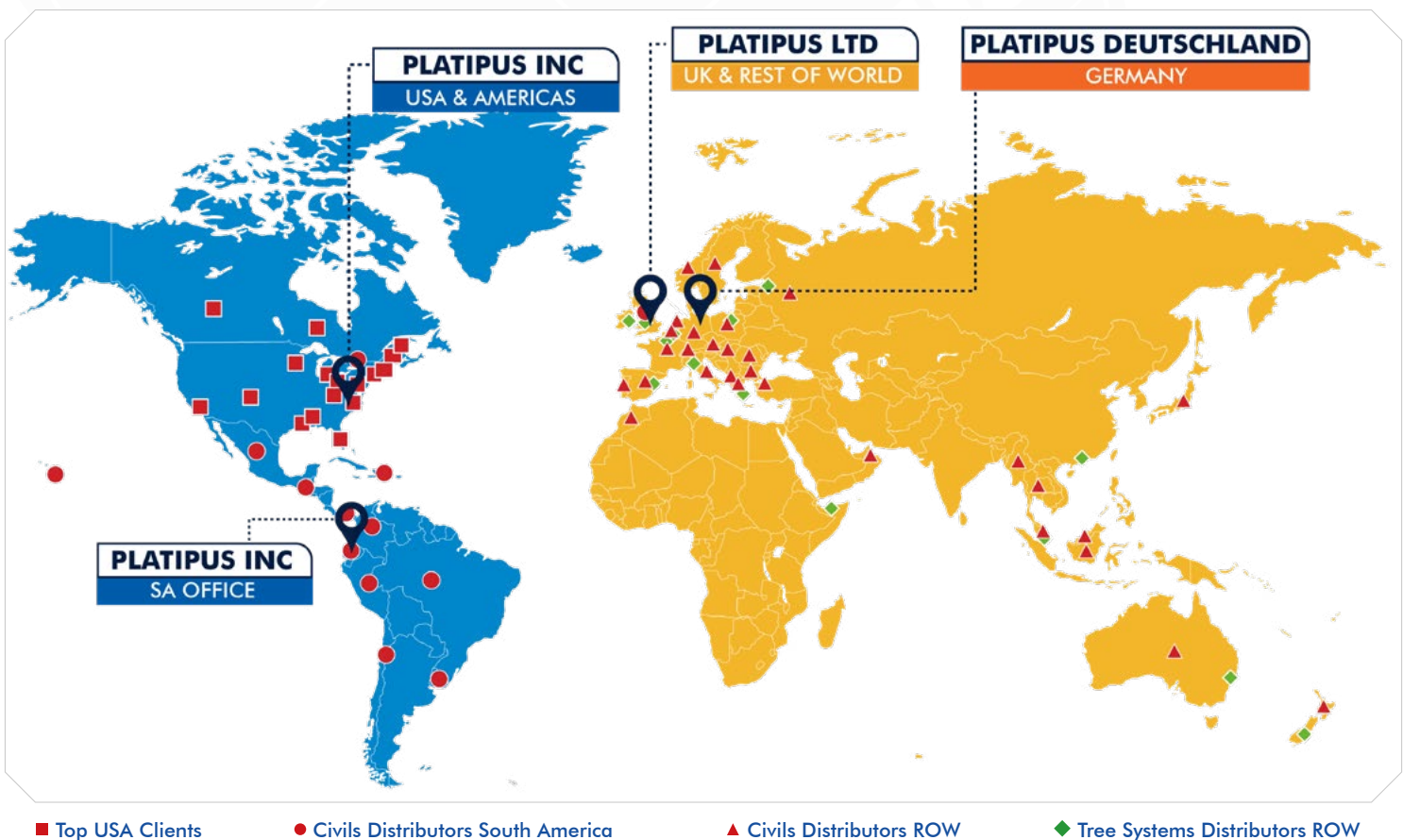
Headquartered in Surrey, England Platipus operates on a global scale, distributing its products through international channels, OEM partnerships including dedicated production facilities and sales offices in the UK, USA, Germany and Ecuador.

Our expertise extends to a comprehensive range of measurable Low Carbon Anchoring Solutions (LCAS®) tailored for diverse market sectors including civil engineering, construction, pipeline buoyancy control, power distribution, marine and photovoltaic applications. These are all supported by our in-house Geotechnical Team that consistently delivers excellence in design.

In addition, Platipus have pioneered a range of standard and bespoke tree anchoring systems to secure and stabilise palms / trees in every planting situation. To complement their range of landscape solutions, Platipus has developed G-WALL®, a modular system, ideal for transforming bare boundaries or large spaces into vibrant colourful living walls.

Drawing on over 40 years of experience, Platipus offers a substantial portfolio of solutions engineered for their simplicity, effectiveness, lightweight design and corrosion resistance. They have earned their reputation as a reliable specialist manufacturer through a continuous commitment to innovation and the development of new industry leading products, gaining them worldwide acceptance.

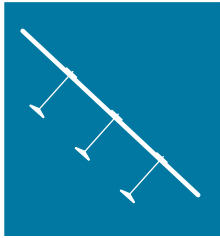
WHERE WE OPERATE



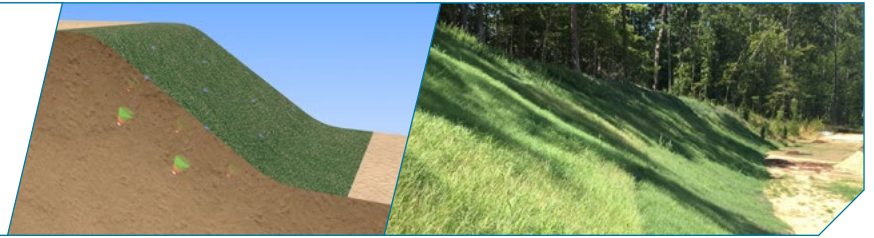
WHAT WE DO

LOW CARBON
ANCHORING SOLUTION

LCAS[®]



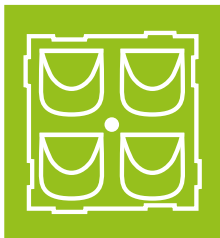
**EROSION & SLOPE
STABILISATION**



**RETAINING STRUCTURE
SUPPORT**



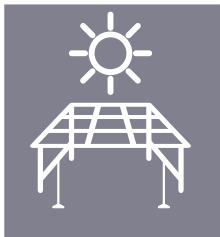
**PALM & TREE
ANCHORING**



**MODULAR LIVING
WALLS**



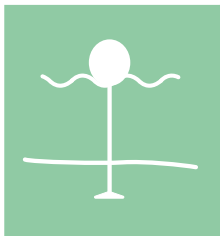
**PIPELINE BUOYANCY
CONTROL**



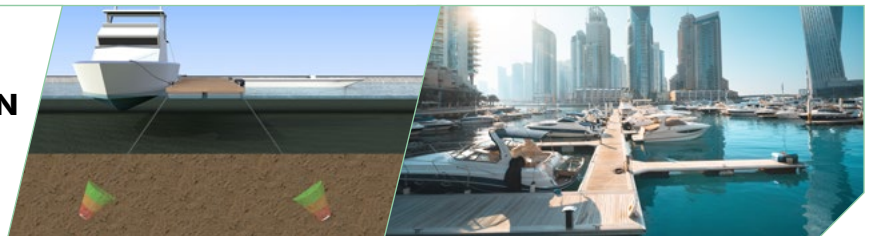
**SOLAR
ANCHORING**



**HIGH & LOW VOLTAGE
ANCHORING**



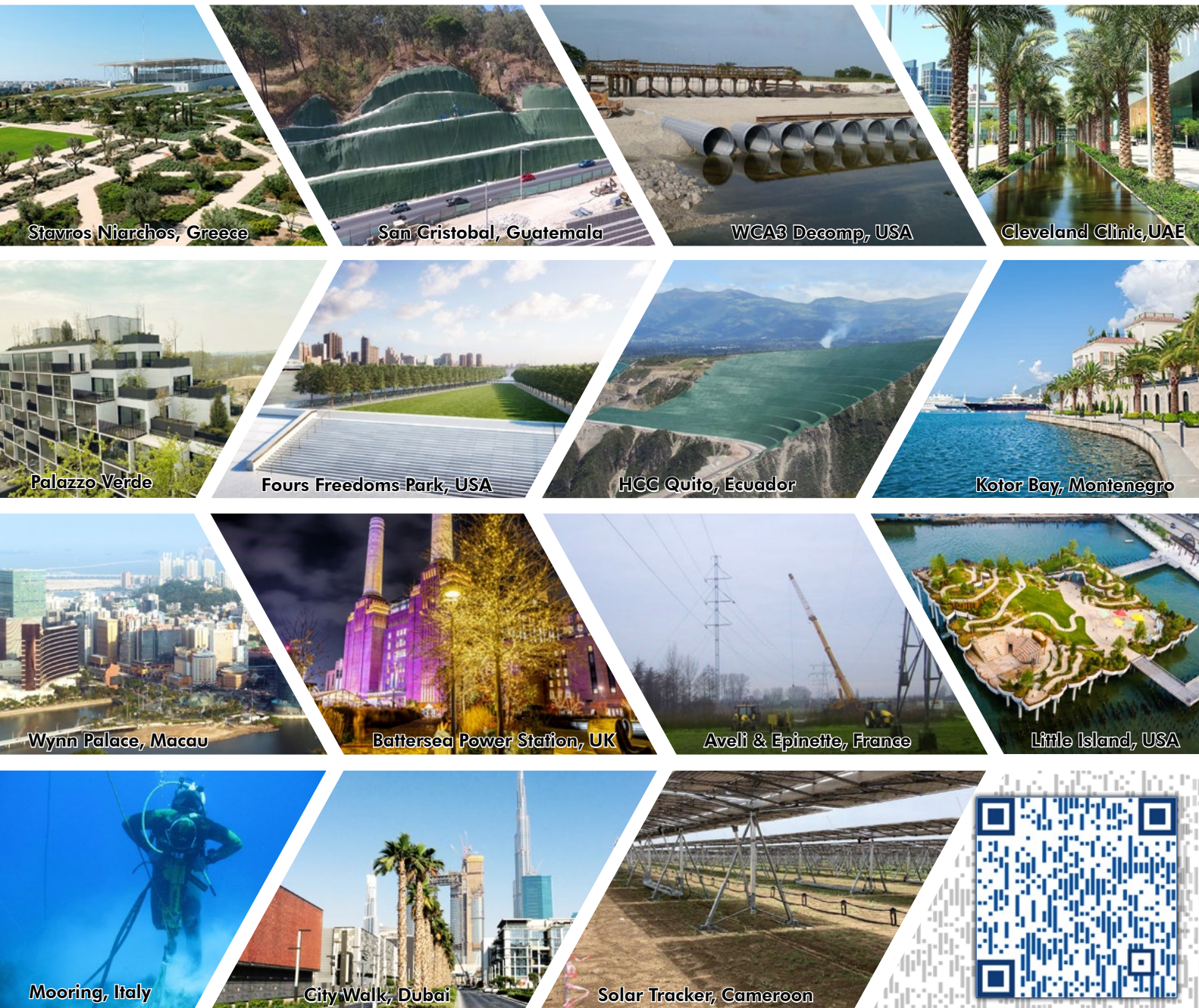
**MOORING & PONTOON
ANCHORS**



SOME OF OUR CLIENTS



KEY PROJECTS



VD170624